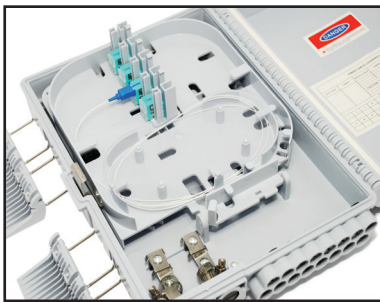
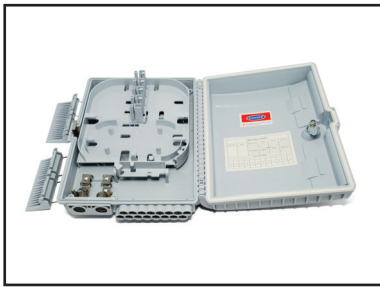
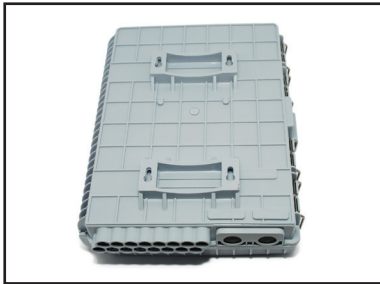


## Fiber optic distribution boxes

## Fiber optic distribution box GFP-16G



## Features

## Fiber optic distribution box GFP-16G

Number of ports	2 optical fiber cable inlets 16 optical fiber cable outlets
Material	PC+ABS
Colour	Gray
Dimensions:	300x240x95 mm
Weight:	1.7 kg
Protection	IP65
Number of splice trays	Integrated, hinged splice tray
Max. fiber optic splice sleeves	24
Number of slots for adapters	16 (SC simplex/LC duplex)
Operating temperature	-35°C~+80°C

## Equipment

Fiber optic splice sleeve (x16)

Fiber protective tube

Installation accessories

Insulation tape

Keys to the lock

## Application

Aerial systems

Ground installation

Duct systems

- Splice sleeves protection of fiber optic cables against mechanical dangers and changeable weather conditions
- Resistance to substances occurring in duct systems
- Low and high temperature resistant
- UV, water resistant

- Sealing of all inlet/outlet slots
- Folding slots for inlet cables
- Wall or pole mounting

